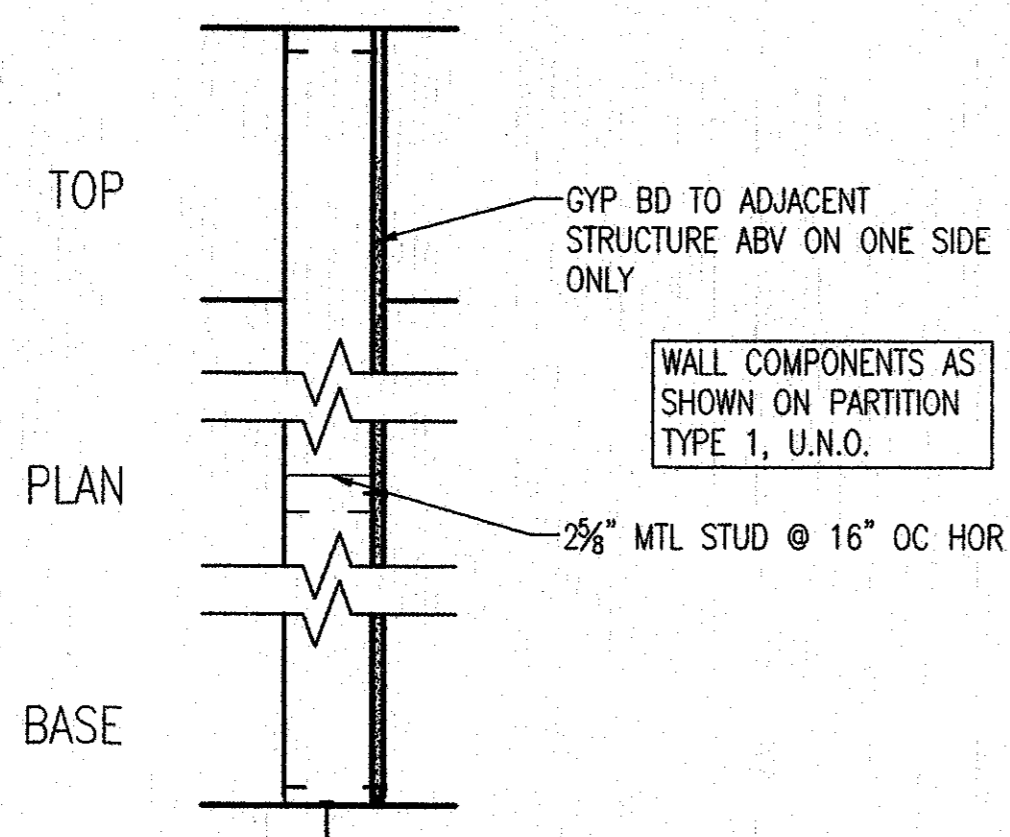
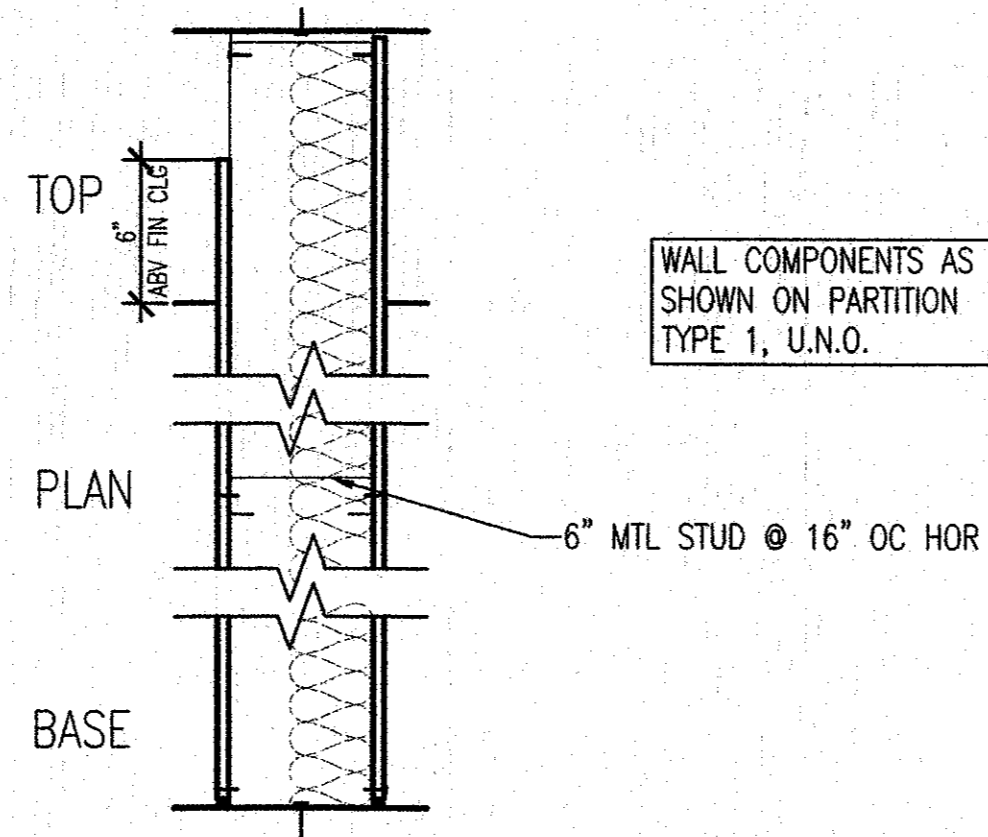


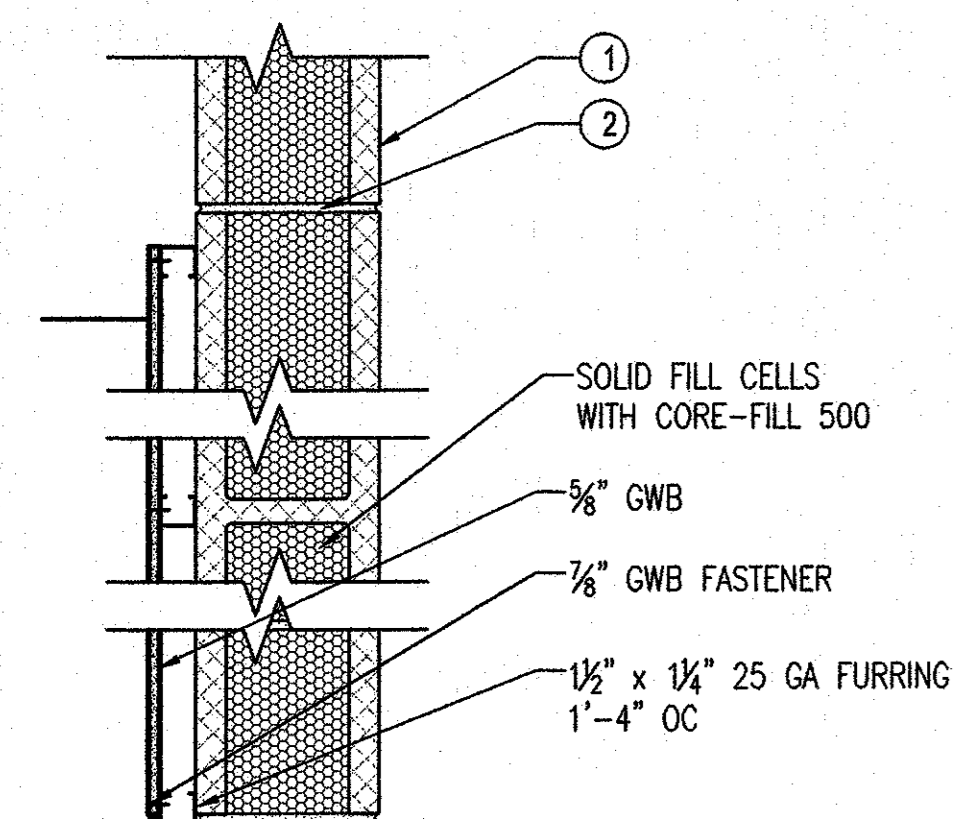
1 PARTITION TYPE
SCALE: NOT TO SCALE



2 PARTITION TYPE
SCALE: NOT TO SCALE



3 PARTITION TYPE
SCALE: NOT TO SCALE



4 PARTITION TYPE
SCALE: NOT TO SCALE

UL U905 - 1-HR?? LOAD-BEARING?? WALL

- 1 CONCRETE BLOCKS - VARIOUS DESIGN, CLASSIFICATION D-2 (2HR)
- 2 MORTAR - BLOCKS LAID IN FULL BED OF MORTAR, MIN. 3/8 IN THICK NOT LESS THAN 2 - 3/4 AND NOT MORE THAN 3 - 3/8 PARTS OF CLEAN SHARP SAND TO 1 PART PORTLAND CEMENT (PROPORTIONED BY VOLUME) AND NOT MORE THAN 50 PERCENT HYDRATED LIME (BY CEMENT VOLUME) VERTICAL JOINTS STAGGERED.
- 3 PORTLAND CEMENT STUCCO OR GYPSUM PLASTER - NOT USED
- 4 LOOSE MASONRY FILL - NOT USED
- 5 FOAMED PLASTIC - NOT USED

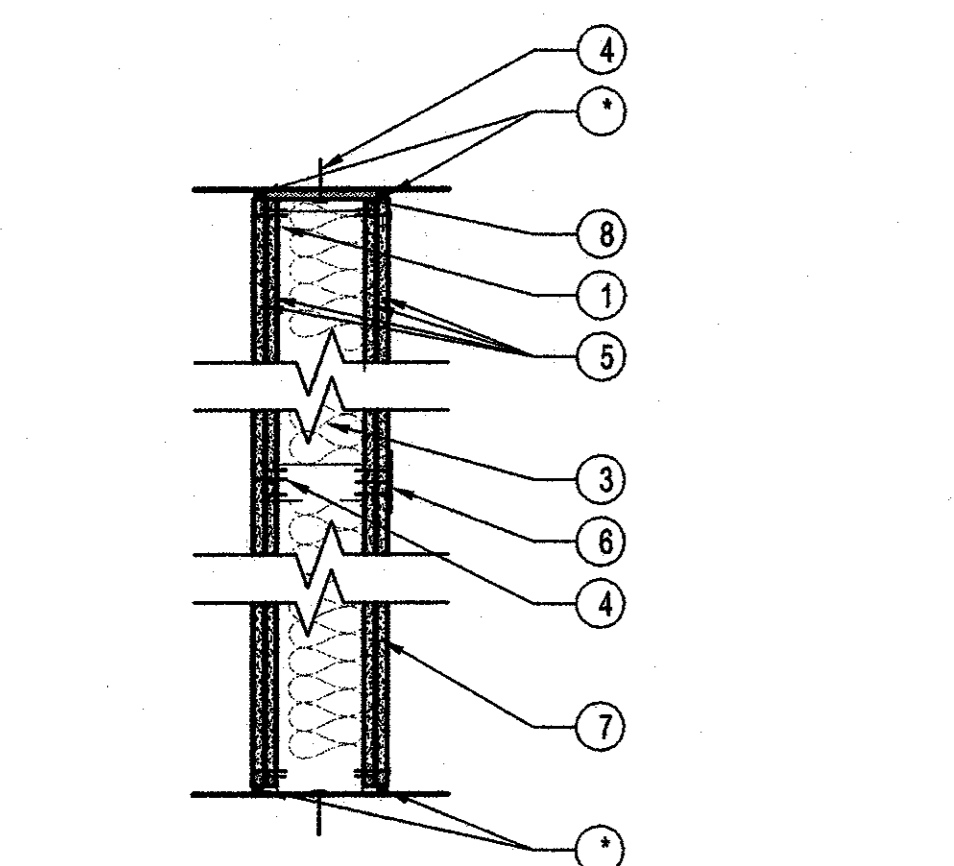
UL U419 - 1-HR NON-LOAD-BEARING WALL

- 1 FLOOR AND CEILING RUNNERS - CHANNEL SHAPED, FABRICATED FROM MIN 25 MSG CORROSION-PROTECTED STEEL, MIN WIDTH TO ACCOMMODATE STUD SIZE, WITH MIN 1 IN. LONG LEGS, ATTACHED TO FLOOR AND CEILING WITH FASTENERS 24 IN OC MAX;
- 2 STEEL STUDS - CHANNEL SHAPED, FABRICATED FROM 25 MSG CORROSION PROTECTED STEEL, 6" THICK, MIN 1-1/4 IN FLANGES AND 1/4 IN RETURN, SPACED A MAX OF 24 IN OC. STUDS TO BE CUT 3/8 TO 3/4 IN LESS THAN ASSEMBLY HEIGHT;
- 3 BATTS AND BLANKETS - MINERAL WOOL BATTS, FRICTION FITTED BETWEEN STUDS AND RUNNERS, 3 IN THICK SAFB;
- 4 GYPSUM BOARD - GYP PANELS WITH BEVELED, SQUARE OR TAPERED EDGES, APPLIED VERTICALLY OR HORIZONTALLY. VERT JOINTS CENTERED OVER STUDS AND STAGGERED ONE STUD CAVITY ON OPPOSITE SIDES OF THE STUDS. HOR JOINTS NEED NOT BE BACKED BY STUDS.
- 5 FASTENERS - 1 IN LONG SPACED 8 IN OC ALONG VERTICAL AND BOTTOM EDGES AND 12 IN OC WHEN PANELS ARE APPLIED VERTICALLY;
- 6 JOINT TAPE AND COMPOUND - VINYL OR CASEINI, DRY OR PREMIXED JOINT COMPOUND APPLIED IN TWO COATS TO JOINTS AND SCREW HEADS. PAPER TAPE, NOM 2 IN WIDE, EMBEDDED IN FIRST LAYER OF COMPOUND OVER ALL JOINTS.
- 7 SEALANT - A BEAD OF ACOUSTICAL SEALANT APPLIED AROUND THE PARTITION PERIMETER FOR SOUND CONTROL.

UL U495 - 2-HR NON-LOAD-BEARING WALL

- 1 FLOOR RUNNERS - CHANNEL-SHAPED, 3-3/8 IN. WIDE WITH 1-3/4 IN. LEGS FORMED FROM NO. 25 MSG (MIN) GALVANIZED STEEL, ATTACHED TO FLOOR AND CEILING WITH FASTENERS SPACED 24 IN. O.C. MAX;
- 2 STEEL STUDS - CHANNEL-SHAPED 3-3/8 IN WIDE (MIN), 1-3/4 IN LEGS, 3/8 IN FOLDED BACK RETURNS, FORMED FROM NO. 25 MSG (MIN) GALVANIZED STEEL SPACED 24 IN. O.C. MAX;
- 3 BATTS AND BLANKETS - OPTIONAL;
- 4 SCREWS - TYPE S SELF-TAPPING SCREWS, 1-3/4 IN OR 2 IN LONG (1-HOUR) OR 2-1/2 IN LONG (2-HOUR);
- 5 BUILDING UNIT - FOR 1-HOUR RATING - NOM 5/8 IN OR 3/4 IN THICK, 4 FT WIDE, FACED GYPSUM WALL BOARD PANELS WITH THE FACED SIDE ON THE INTERIOR WALL CAVITY. PANELS ATTACHED TO STUDS AND FLOOR AND CEILING RUNNERS WITH SCREWS SPACED 8 IN O.C. IN THE FIELD OF THE PANEL JOINTS ORIENTED VERTICALLY AND STAGGERED ON OPPOSITE SIDES OF THE ASSEMBLY;
- 6 JOINT TAPE AND COMPOUND - VINYL, DRY OR PREMIXED JOINT COMPOUND, APPLIED IN TWO COATS TO JOINTS AND SCREW HEADS; PAPER TAPE, 2 IN WIDE, EMBEDDED IN FIRST LAYER OF COMPOUND OVER ALL JOINTS;
- 7 GYPSUM BOARD - FOR 2-HOUR RATING - ANY CLASSIFIED 3/8 IN THICK (MIN), 4 FT WIDE, WALLBOARD APPLIED OVER EXTERIOR FACE OF BUILDING UNIT. WALL BOARD TO BE APPLIED VERTICALLY WITH JOINTS STAGGERED 24 IN FROM BUILDING UNIT AND ATTACHED TO STUDS AND FLOOR AND CEILING RUNNERS WITH SCREWS 8 IN O.C.
- 8 CONT. MINERAL WOOL FIRESTOPPING, COMPRESSED 20% FILL RECESSES.

5 PARTITION TYPE
SCALE: NOT TO SCALE



6 PARTITION TYPE
SCALE: NOT TO SCALE * UL APPROVED FIRE SEALANT

ROOM FINISH SCHEDULE

Room Nr	Room Name	Floor-Fin	Base Mat'l	Wall Finishes				Ceiling		Remarks
				Wall North	Wall South	Wall East	Wall West	Height	Ctg-Mat'l	
101	CORRIDOR	CT	*	PT	PT	PT	PT	9'-0"	*	*Existing to remain
102	CORRIDOR	CT	CT	PT	PT	PT	PT	9'-0"	ACT-1	
103	CORRIDOR	CT	CT	PT	PT	PT	PT	9'-0"	ACT-1	
104	STAIRWAY	CONC/*	RB-4	PT	PT	PT	PT	9'-0"	ACT-1	*Rubber treads + risers
105	LOBBY	VCT	RB-4	PT	PT	PT	PT	9'-0"	ACT-1	
106	ELEVATOR	VCT	*	*	*	*	*	0"	*	* Provided by manufacturer
107	ELEV ROOM	CONC	NA	PT	PT	PT	PT	0"	EXPOSED/PT	
108	RECEPTION	VCT	RB-4	PT	PT	PT	PT	9'-0"	ACT-1	
109	TRAINING ROOM	VCT	RB-4	PT	PT	PT	PT	10'-0"	ACT-1	
110	TOILET	VCT	CT	*PT	*PT	*PT	*PT	9'-0"	ACT-MR	48" Ctg wainscot
111	JAN CLOS	VCT	RB-4	PT	PT	PT	PT	9'-0"	ACT-MR	
112	MECH ROOM	CONC	NA	PT	PT	PT	PT	0"	EXPOSED/PT	
113	TOILET	CT	CT	*PT	*PT	*PT	*PT	9'-0"	ACT-MR	* 48" Ctg wainscot
114	KITCHENETTE	CONC	RB-4	PT	PT	PT	PT	9'-0"	ACT-1	
115	STORAGE	CONC	NA	PT	PT	PT	PT	0"	EXPOSED/PT	
116	CORRIDOR	VCT	RB-4	PT	PT	PT	PT	9'-0"	ACT-1	
117	BREAK ROOM	VCT	RB-4	PT	PT	PT	PT	9'-0"	ACT-1	
118	STORAGE	CONC	NA	PT	PT	PT	PT	0"	EXPOSED/PT	
119	STORAGE	CONC	NA	PT	PT	PT	PT	0"	EXPOSED/PT	
120	MECH ROOM	CONC	NA	PT	PT	PT	PT	0"	EXPOSED/PT	
121	MULTIPURPOSE ROOM	VCT	RB-4	PT	PT	PT	PT	0"	ACT-1	
122	COMPUTER	VCT	RB-4	PT	PT	PT	PT	9'-0"	OPEN	
123	STORAGE	CONC	NA	PT	PT	PT	PT	0"	EXPOSED/PT	
124	STAIRWAY	CONC/*	RB-4	PT	PT	PT	PT	0"	OPEN	*Rubber treads + risers
125	TOILET	CT	CT	*PT	*PT	*PT	*PT	9'-0"	ACT-MR	* 48" Ctg wainscot
126	LOCKERS	CT	CT	*PT	*PT	*PT	*PT	9'-0"	ACT-MR	* 48" Ctg wainscot
127	TOILET	CT	CT	*PT	*PT	*PT	*PT	9'-0"	ACT-MR	* 48" Ctg wainscot
128	LOCKERS	VCT	CT	*PT	*PT	*PT	*PT	9'-0"	ACT-MR	* 48" Ctg wainscot
129	CORRIDOR	VCT	RB-4	PT	PT	PT	PT	9'-0"	ACT-1	
130	OFFICE	CPT-1	RB-4	PT	PT	PT	PT	9'-0"	ACT-1	
131	OFFICE	CPT-1	RB-4	PT	PT	PT	PT	9'-0"	ACT-1	
132	CONFERENCE	CPT-1	RB-4	PT	PT	PT	PT	9'-0"	ACT-1	
133	OFFICE	CPT-1	RB-4	PT	PT	PT	PT	9'-0"	ACT-1	
134	OFFICE	CPT-1	RB-4	PT	PT	PT	PT	9'-0"	ACT-1	
135	LIBRARY	CPT-1	RB-4	PT	PT	PT	PT	9'-0"	ACT-1	
136	OFFICE	CPT-1	RB-4	PT	PT	PT	PT	9'-0"	ACT-1	
137	OFFICE	CPT-1	RB-4	PT	PT	PT	PT	9'-0"	ACT-1	
138	OFFICE	CPT-1	RB-4	PT	PT	PT	PT	9'-0"	ACT-1	
139	OFFICE	CPT-1	RB-4	PT	PT	PT	PT	9'-0"	ACT-1	
140	OFFICE	CPT-1	RB-4	PT	PT	PT	PT	9'-0"	ACT-1	
141	OFFICE	CPT-1	RB-4	PT	PT	PT	PT	9'-0"	ACT-1	
142	OFFICE	CPT-1	RB-4	PT	PT	PT	PT	9'-0"	ACT-1	
143	RECEPTION	CPT-1	RB-4	PT	PT	PT	PT	9'-0"	ACT-1	
144	STORAGE	VCT	RB-4	PT	PT	PT	PT	9'-0"	ACT-1	
145	OFFICE	CPT-1	RB-4	PT	PT	PT	PT	9'-0"	ACT-1	
146	OFFICE	CPT-1	RB-4	PT	PT	PT	PT	9'-0"	ACT-1	
147	STORAGE	VCT	RB-4	PT	PT	PT	PT	9'-0"	ACT-1	
148	OFFICE	CPT-1	RB-4	PT	PT	PT	PT	9'-0"	ACT-1	
149	OFFICE	CPT-1	RB-4	PT	PT	PT	PT	9'-0"	ACT-1	
150	MECH ROOM	CONC	NA	PT	PT	PT	PT	0"	EXPOSED/PT	
151	STORAGE	CONC	NA	PT	PT	PT	PT	0"	EXPOSED/PT	
201	STAIRWAY	VCT	RB-4	PT	PT	PT	PT	9'-0"	OPEN	*Rubber treads & risers
202	RECEPTION	VCT	RB-4	PT	PT	PT	PT	9'-0"	ACT-1	
203	CONFERENCE	CPT-2	WB	PT	PT	PT	PT	9'-0"	ACT-3	
204	ELEVATOR	VCT	NA	NA	NA	NA	NA	0"	NA	
205	MECH ROOM	CONC	NA	PT	PT	PT	PT	0"	EXPOSED/PT	
206	MECH ROOM	CONC	NA	PT	PT	PT	PT	0"	EXPOSED/PT	
207	TOILET	CT	CT	PT/*	PT/*	PT/*	PT/*	9'-0"	ACT-1MR	* 48" Wainscot
208	JAN CLOS	VCT	RB-4	PT	PT	PT	PT	9'-0"	ACT-MR	
209	TOILET	CT	CT	PT/*	PT/*	PT/*	PT/*	9'-0"	ACT-1MR	* 48" Wainscot
210	RECEPTION	CPT-2	RB-4	PT	PT	PT	PT	9'-0"	ACT-2	
211	WORK ROOM	CPT-2	RB-4	PT	PT	PT	PT	9'-0"	ACT-2	
212	OFFICE	CPT-2	RB-4	PT	PT	PT	PT	9'-0"	ACT-2	
213	OFFICE	CPT-2	RB-4	PT	PT	PT	PT	9'-0"	ACT-2	
214	OFFICE	CPT-2	RB-4	PT	PT	PT	PT	9'-0"	ACT-2	
215	OFFICE	CPT-2	RB-4	PT	PT	PT	PT	9'-0"	ACT-2	
216	STORAGE	VCT	RB-4	PT	PT	PT	PT	9'-0"	ACT-1	
217	CORRIDOR	VCT	RB-4	PT	PT	PT	PT	9'-0"	ACT-2	
218	OFFICE	CPT-2	RB-4	PT	PT	PT	PT	9'-0"	ACT-2	
219	CONFERENCE	CPT-2	RB-4	PT	PT	PT	PT	9'-0"	ACT-3	
220	OFFICE	CPT-2	RB-4	PT	PT	PT	PT	9'-0"	ACT-2	
221	TOILET	CT	CT	PT	PT	PT	PT	9'-0"	ACT-MR	
222	TOILET	CT	CT	PT	PT	PT	PT	9'-0"	ACT-MR	
223	OFFICE	CPT-2	RB-4	PT	PT	PT	PT	9'-0"	ACT-2	
224	CONFERENCE	CPT-2	WB	PT	PT	PT	PT	9'-0"	ACT-3	
225	STORAGE	VCT	RB-4	PT	PT	PT	PT	9'-0"	ACT-1	
226	KITCHENETTE	VCT	RB-4	PT	PT	PT	PT	9'-0"	ACT-1	
227	STORAGE	CPT	RB-4	PT	PT	PT	PT	9'-0"	ACT-1	
228	STAIRWAY	VCT	RB-4	PT	PT	PT	PT	9'-0"	OPEN	*Rubber treads & risers
229	CORRIDOR	UNFIN	UNFIN	UNFIN	UNFIN	UNFIN	UNFIN	9'-0"	UNFIN	
230	TOILET	UNFIN	UNFIN	UNFIN	UNFIN	UNFIN	UNFIN	9'-0"	UNFIN	
231	TOILET	UNFIN	UNFIN	UNFIN	UNFIN	UNFIN	UNFIN	9'-0"	UNFIN	
232	COMPUTER	VCT	RB-4	PT	PT	PT	PT	9'-0"	ACT-1	
233	FUTURE OFFICE	UNFIN	UNFIN	UNFIN	UNFIN	UNFIN	UNFIN	9'-0"	UNFIN	
234	CORRIDOR	UNFIN	UNFIN	UNFIN	UNFIN	UNFIN	UNFIN	9'-0"	UNFIN	
244	GLOSET	CPT-2	RB-4	PT	PT	PT	PT	9'-0"	ACT-1	

FINISH ABBREVIATIONS:

- ACT-1 ACOUSTIC CEILING TILE (TYP.), EQUAL TO ARMSTRONG #770
- ACT-2 EQUAL TO ARMSTRONG #704
- ACT-3 EQUAL TO ARMSTRONG #1756
- ACT-MR ACT-MOISTURE RESISTANT EQUAL TO ARMSTRONG #607
- CONC CONCRETE
- CPT-1 CARPET PER OWNER
- CPT-2 CARPET PER OWNER
- CT CERAMIC TILE
- GYP BD GYPSUM BOARD
- PT PAINT
- RB-# RUBBER BASE-(HT IN INCHES)
- VCT VINYL COMPOSITE TILE

INTERIOR FINISH NOTES:

- ALL GYPSUM BOARD TO BE LEVEL 4 FINISH, UNLESS NOTED OTHERWISE. A LEVEL 4 FINISH IS WHERE ALL JOINTS AND INTERIOR ANGLES SHALL HAVE TAPE EMBEDDED IN JOINT COMPOUND AND TWO SEPARATE COATS OF JOINT COMPOUND APPLIED OVER ALL FLAT JOINTS AND ONE SEPARATE COAT APPLIED OVER ALL INTERIOR ANGLES. FASTENER HEADS AND ACCESSORIES SHALL BE COVERED WITH THREE SEPARATE COATS OF JOINT COMPOUND. ALL JOINT COMPOUND SHALL BE SMOOTH AND FREE OF TOOL MARKS AND RIDGES.

539 SOUTH MAIN STREET
P.O. BOX 515
BROADWAY, VA 22815-0515
540.896.8911 Tel
896.526.8922 Toll free
540.896.6502 Fax
www.lantzcc.com

SEAL: _____
Lantz Construction Company, hereby reserves its common law copyright and all other property rights in these plans, ideas and designs. These plans, ideas and designs are not to be reproduced, altered or copied in any form or manner whatsoever, nor are they to be assigned to any third party without first obtaining the express written consent of Lantz Construction Company. Title to these drawings remains with Lantz Construction Company without prejudice.

NO.	DATE	REVISION

ROCKINGHAM COUNTY
ADMINISTRATION BUILDING ADDITION
HARRISONBURG, VA

APPROVALS:

ENGINEERING & DESIGN: _____ DATE: _____

PROJECT MANAGER: _____

ESTIMATING: _____

TITLE: _____

DATE: _____

OWNER: _____

BY: _____

TITLE: _____

DATE: _____